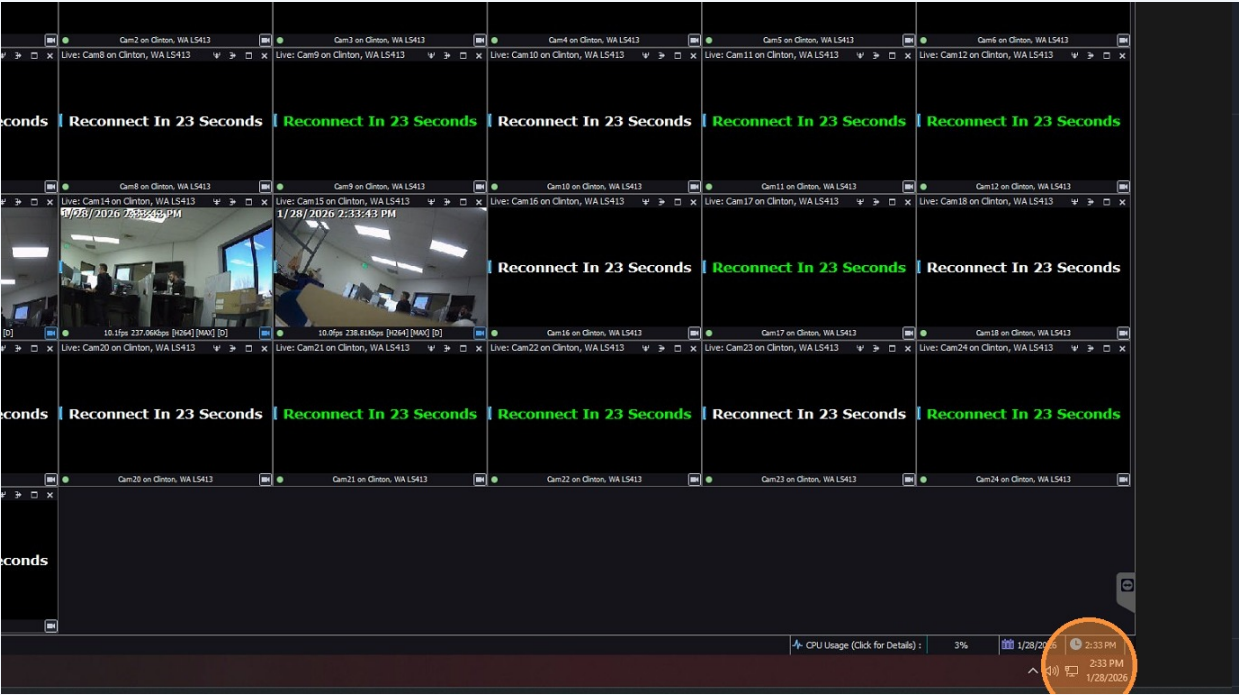


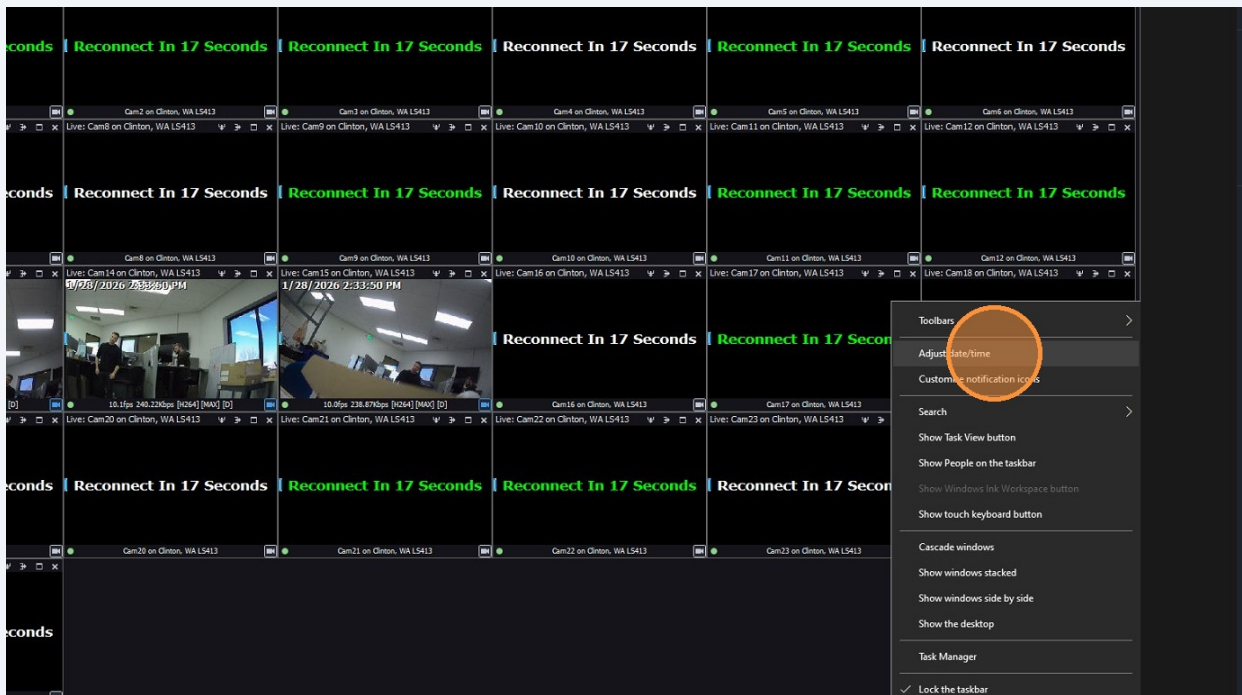
# Timezone change.

The Timezone can be enabled after a windows update, this can change the time to an entirely different timezone.

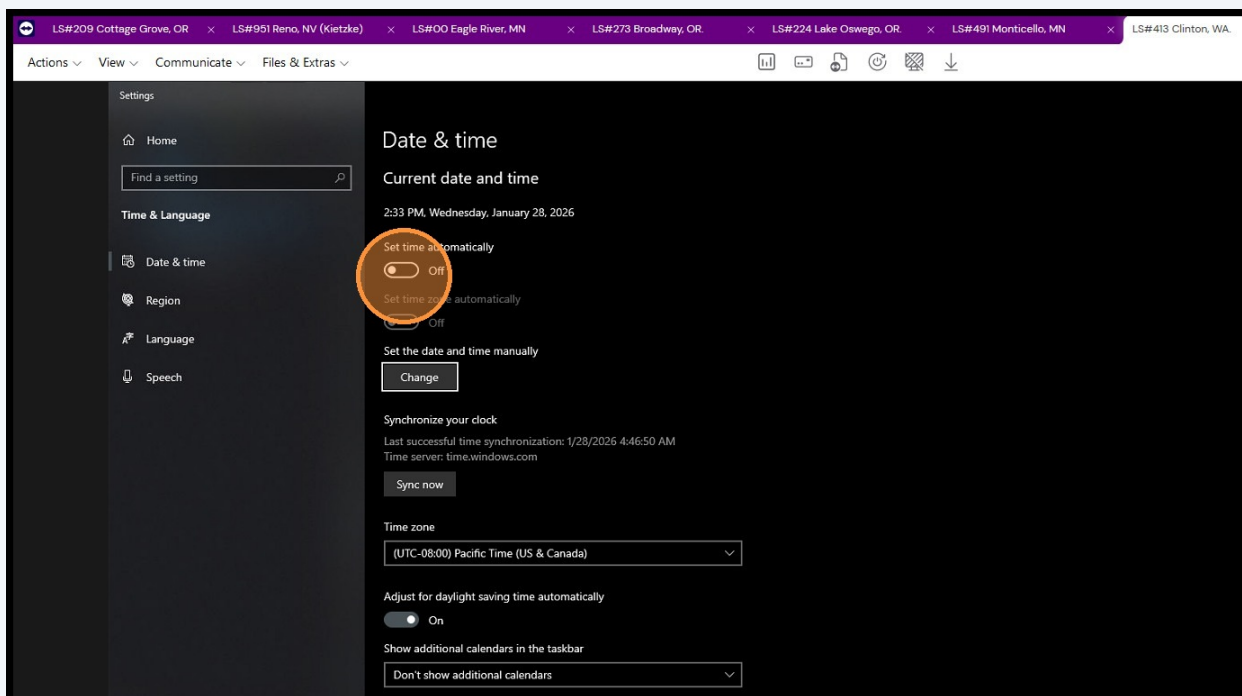
1 Right click Time/Date



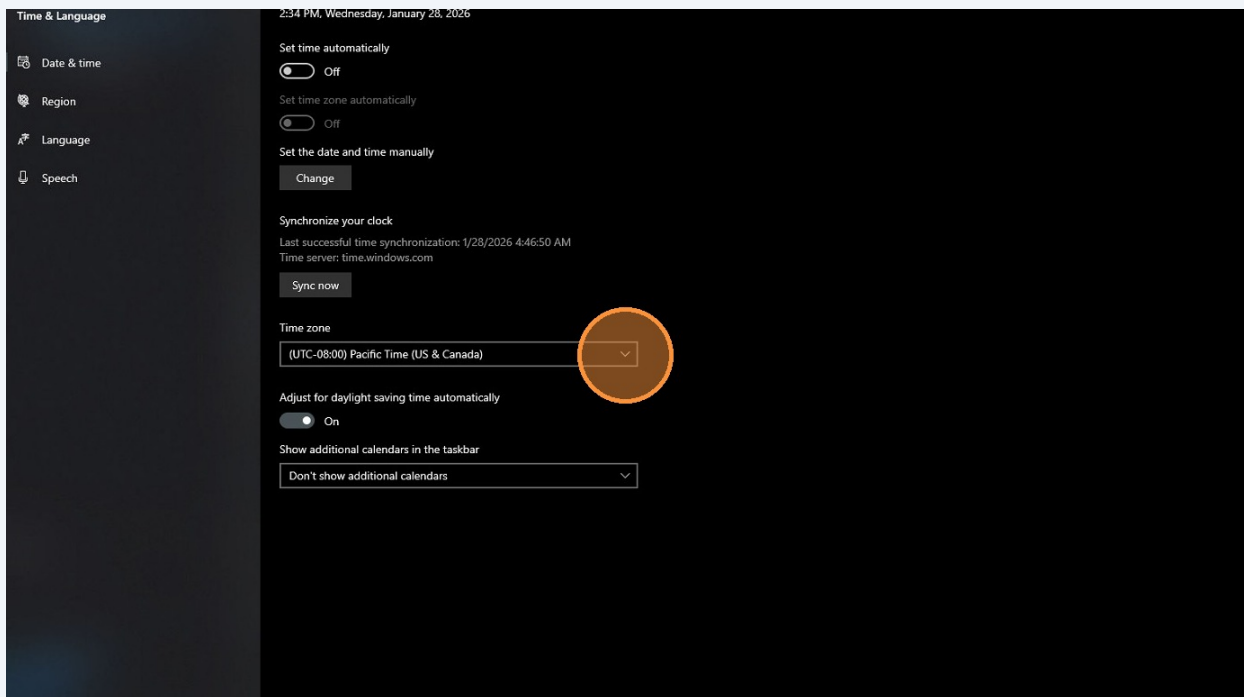
## 2 Click adjust date/time



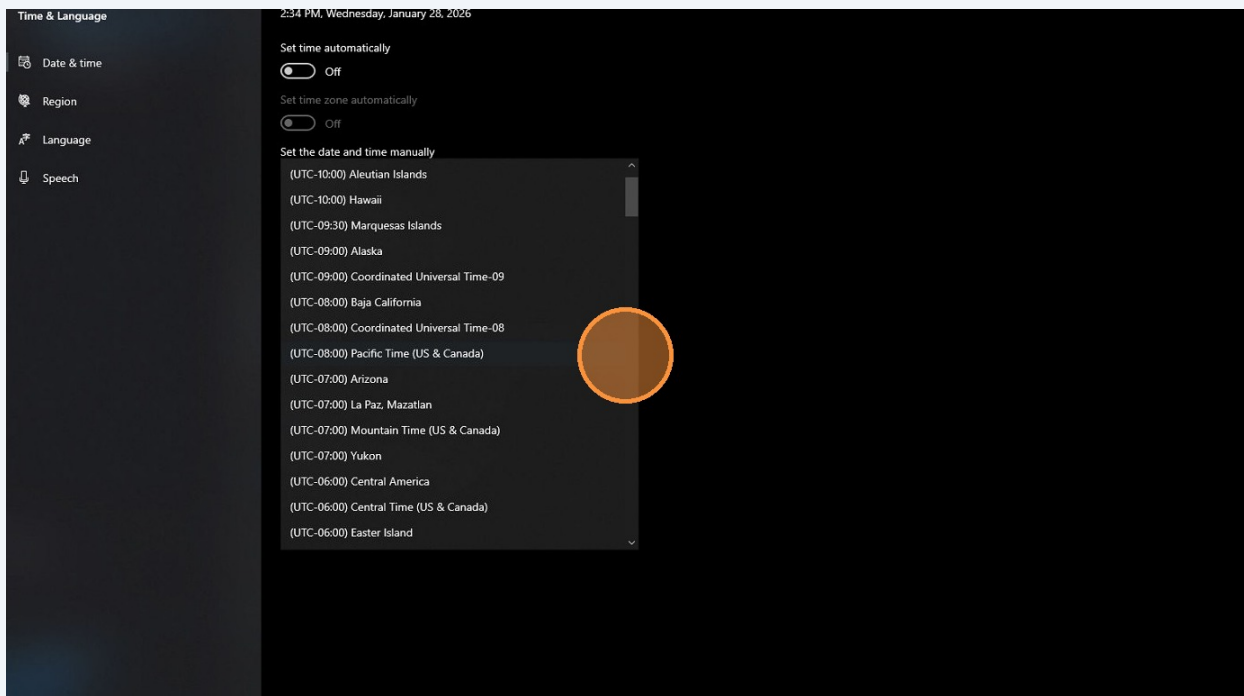
## 3 Toggle off "Set Time Automatically."



## 4 Click drop down.



## 5 Set your correct timezone and close the window.





System time will change immediately, however VIGIL Client time will not update until the system is rebooted.