

A large, white industrial HVAC unit is the central focus, situated in a warehouse or industrial facility. The unit has a distinctive top section with several angled, louvered vents. Below the main body, there are two large, square panels with a diamond-patterned mesh. The background shows the interior of a warehouse with a high ceiling, metal beams, and various industrial equipment like shelving and a conveyor system.

# **ELITE**® HVAC SYSTEMS

**THE AIR-ROTATION®  
SYSTEM YOU TRUST**

**NOW SIZED FOR SMALLER APPLICATIONS**

# SIMPLE AND EFFICIENT

## COMPLETELY DUCTLESS SYSTEM



The Johnson LITE® ductless system means a faster install, better system efficiency, fewer utility hookups, and so much more. Johnson LITE® can save significant operating costs compared to rooftop systems.

## SIMPLIFIED INSTALLATION



The Johnson LITE® HVAC System can be installed with just a pallet jack and small lift, meaning no rigging equipment. The lightweight sections and a single-point power connection means a simpler install.

## ONE-TOUCH CONTROLS



Controls options include Nest and DDC.

## GAS-FREE HEATING



The same coil / DX system provides heating and cooling. This means no heater section, no gas train, no gas piping, and no venting are required. Simple and efficient.

## EASY ROUTINE MAINTENANCE



Johnson LITE® allows for ground level servicing, making routine maintenance simple and safe.

## JOHNSON AIR-ROTATION® HVAC SYSTEMS



At the end of the day, this is the same Johnson Air-Rotation® HVAC System that has been around for over 70 years, providing uniform temperatures/humidity with efficient air movement now sized for smaller applications.



AVAILABLE IN MULTIPLE EXTERIOR COLORS

## THE NEXT WAVE IN HVAC FOR SMALL, OPEN SPACES.



NO DUCTWORK



EC FAN MOTORS



GAS FREE HEATING





## THREE POWERFUL OPTIONS FOR HEATING & COOLING IN A SMALL, DUCTLESS FOOTPRINT



### 10-TON

- Up to 15 Tons Cooling Capacity.
- Up to 325 MBH Heating Output with Hot Water.
- (QTY 1) One 1-HP ECM Fan Motor.
- Compact 34"x 48" Footprint.
- Common Application 3,000 - 8,000 sq. ft.



### 20-TON

- Up to 25 Tons Cooling Capacity.
- Up to 650 MBH Heating Output with Hot Water.
- (QTY 2) Two 1-HP ECM Fan Motors.
- Compact 34"x 72" Footprint.
- Common Application 6,000 - 12,000 sq. ft.



### 35-TON

- Up to 40 Tons Cooling Capacity.
- Up to 1,000 MBH Heating Output with Hot Water.
- (QTY 3) Three 1-HP ECM Fan Motors.
- Compact 34"x 102" Footprint.
- Common Application 9,000 - 20,000 sq. ft.

# FREQUENTLY ASKED QUESTIONS

## WHAT ARE THE HEATING / COOLING CAPACITIES?

We have three sizes; a 10-ton, 20-ton, or 35-ton (nominal) system. The exact capacity will vary based on space temperature, outdoor temperature, and condensing unit (or heat pump) selection. Please consult with a sales engineer for details.

## WHAT ARE THE DIMENSIONS? ELECTRICAL? WEIGHTS?

All dimensions, electrical info, and features are on the technical data sheet.

## IS THIS A SELF-CONTAINED SYSTEM OR A SPLIT SYSTEM?

The LITE® HVAC System is a split system, as the air handler needs to be paired with a condensing unit, heat pump, or VRV/VRF system. Chilled-water cooling coils and hot-water heating coils are also available.

## ARE THERE OPTIONS FOR NATURAL GAS HEATING?

No- the LITE® HVAC System is designed to optimize energy efficiency by providing gas-free heating, in addition to cooling. With continued advances in heat pump technology, the system may be suitable for extreme climates as well. This product is also aligned with the growing trend towards electrification of HVAC - utilizing clean energy sources (wind & solar) versus fossil fuels.

## WHERE CAN I LOCATE THE SYSTEM?

The LITE® HVAC System can be designed to be installed indoors or outdoors, typically near an exterior wall (especially if outside air is required). The cooling unit, heat pump, or VRV/VRF would be installed directly outside the building or on the roof.

## WHAT ARE MY OPTIONS FOR OUTSIDE AIR?

The available options include minimum outside air and/or full economizer functionality.

## HOW IS THE SYSTEM INSTALLED?

All major components, wiring, and coil connections are located in the base section, which can be installed with a forklift or pallet jack. The slim profile allows all sections to fit through many standard doors. Once the base is set and anchored, the extension section and outlet section (which are much lighter than the base) are simply stacked on the base and secured with fasteners. It typically takes no more than a few hours for a mechanical contractor to set up the system and prepare it for piping and power connections.

## HOW IS THE SYSTEM CONTROLLED?

Our standard controls include a return-air thermostat with two stages of heating and cooling. An optional DDC controller is available (analog or staged output).

## IS FREIGHT INCLUDED IN MY PRICE?

LITE® HVAC Systems are shipped LTL, though some larger orders can be shipped via dedicated truck. As a result, freight is estimated on a project-by-project basis and not included in base pricing.

## IS FACTORY START-UP INCLUDED IN MY PRICE?

Factory start-up is available if needed but is not required for most LITE® HVAC Systems.

## WHAT EXTERIOR COLORS ARE AVAILABLE?

Slate or light gray is standard on all LITE® HVAC Systems. Please consult our team for custom options.

**SIMPLE AND EASY TO INSTALL.**

**DESIGNED WITH THE AIR-ROTATION®  
TECHNOLOGY YOU TRUST.**



# COMMON APPLICATIONS



**BREWERIES**



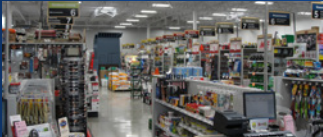
**SMALL CONCERT VENUES**



**AIRPORT TERMINALS**



**GYMNASIUMS**



**HARDWARE STORES**



**AUTO SHOPS**



**RESTAURANTS**



**HISTORICAL BUILDINGS**



**MANUFACTURING / WORKSHOPS**



**DISTRIBUTION / WAREHOUSE STORAGE**



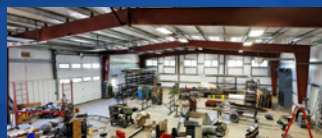
**SHORT-TERM LEASED SPACES**



**COMMUNITY / CONVENTIONCENTERS**



**DATA CENTERS**



**FABRICATION / TOOLING**



**RETAIL STORES**



**WORSHIP SPACES**



**FRAME & AIR-STRUCTURES**



**SPORTS COMPLEXES**



**FITNESS CLUBS**



**COMMERCIAL REAL ESTATE**



**CAR DEALERSHIPS**



**FIRE STATIONS**



**EVENT SPACES**



**HANGARS**



**STADIUM / ARENA CONCOURSES**



**CONSTRUCTION SITES**



**TENNIS FACILITIES**



**AGRICULTURE**



**VISIT**  
**[JOHNSONAIRROTATION.COM/LITE](https://JOHNSONAIRROTATION.COM/LITE)**  
**TO SEE ALL AVAILABLE MODELS!**



**JOHNSON**  
AIR-ROTATION® HVAC SYSTEMS

1-800-325-1303  
11880 Dorsett Road, St. Louis, MO 63043